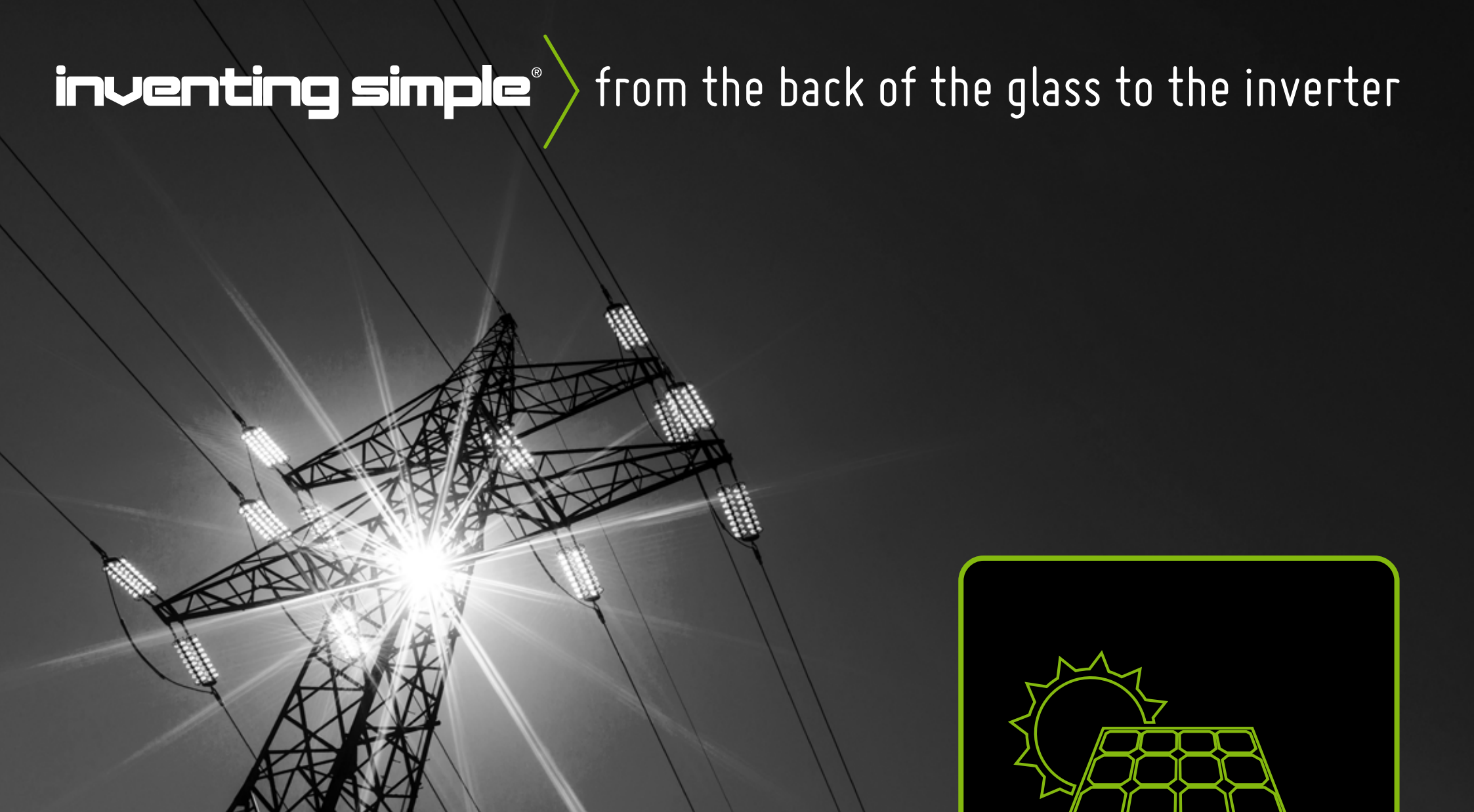
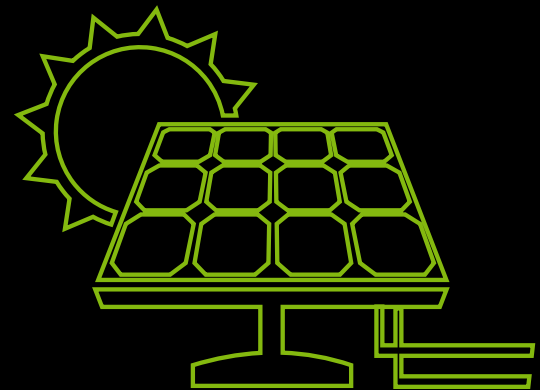


inventing simple®

> from the back of the glass to the inverter



shoals[®]
technologies group



photovoltaic catalog

shoals technologies group

© 2017, All rights reserved.

No part of this book may be reproduced, stored in a retrieval system or transmitted in any form, or by no means, electronic, mechanical, photocopying, recording or otherwise, without prior permission of the publisher.

< table of contents

locations

page 04

introduction

page 05

balance on tracker

page 06

harnesses

page 08

combiners

page 12

landed or modified boxes

page 20

wireless monitoring

page 22

power skids

page 24

projects

page 26

locations



GLOBAL HEADQUARTERS

Sales & Manufacturing

Shoals Technologies Group — Plant 1
1400 Shoals Way
Portland, TN 37148 USA

T: +1 (615) 451-1400
F: +1 (615) 325-5252
sales@shoals.com

PLANT 2

Sales & Manufacturing

Shoals Technologies Group — Plant 2
1035 Fred White Blvd
Portland, TN 37148 USA

T: +1 (615) 451-1400
F: +1 (615) 325-5252
sales@shoals.com

PLANT 3

OEM Manufacturing

Shoals Technologies Group — Plant 3
215 Industrial Drive
Muscle Shoals, AL 35661 USA

T: +1 (256) 314-1119
F: +1 (256) 314-1795
sales@shoals.com

STG SOUTH AFRICA

Manufacturing

Shoals Technologies Group SA
121 13th Ave
Johannesburg 1508
South Africa

T: +1 615 707 5928
southafrica@shoals.com

STG UNITED ARAB EMIRATES

Sales

Al Abdulkarim Holdings
Naizak Global Engineering Systems
PO Box 502315
Dubai, United Arab Emirates

T: +1 615 707 5928
sales@shoals.com

STG SAUDI ARABIA

Sales & Manufacturing

Al Abdulkarim Holdings
Naizak Global Engineering Systems
PO Box 31337
Al Khobar 31952
Kingdom of Saudi Arabia

T: +1 615 707 5928
sales@shoals.com

STG JAPAN

Sales

Sojitz Corporation
2-1-1 Uchisaiwaicho, Chiyoda-ku
Tokyo 100-869 Japan

T: +1 615 707 5928
sales@shoals.com

STG SHANGHAI

Sales & Manufacturing

1376 Nanjing Road West
Shanghai 200040
China

T: +1 615 707 5928
southafrica@shoals.com

STG HANGZHOU

Sales & Manufacturing

2930 Nanhuan Road
Hangzhou City
China

T: +1 615 707 5928
sales@shoals.com

STG GUANGDONG

Sales & Manufacturing

4th Village, DongGuan City
GuangDong 523710
China

T: +1 615 707 5928
china@shoals.com

STG TAIWAN

Sales & Manufacturing

Shoals Technologies Group Taiwan
4th FL-1, 163, Keelung Road, Sec. 1
Taipei, Taiwan, R.O.C

T: +1 615 707 5928
taiwan@shoals.com

STG XIAMEN

Manufacturing

Shoals Technologies Group Xiamen
Lian Qian Xi Road
Si Ming District, Xiamen City 361008
China

T: +1 615 707 5928
china@shoals.com

introduction >

making solar as simple as black and white.

Life is complicated. Installing your field doesn't have to be.



CERTIFICATIONS

- TUV certified
- UL Certified: UL508A, UL1741, UL3730, UL4248, UL6703, UL9703
- ISO 9001:2008 certified
- ETL Certified: UL1741, CSA C22.2-107.1, UL6703, UL9703
- JET Certified

inventing simple®

Inventing Simple® isn't just a slogan to us, it's a way of life. Using simple plug-and-play ideology, we revolutionized solar installations in 2003 with our Interconnect System™. Our harnessing system is now the gold standard EPC's use around the world. By using simple ideas, we are making solar energy a more affordable and clean power source for future generations.

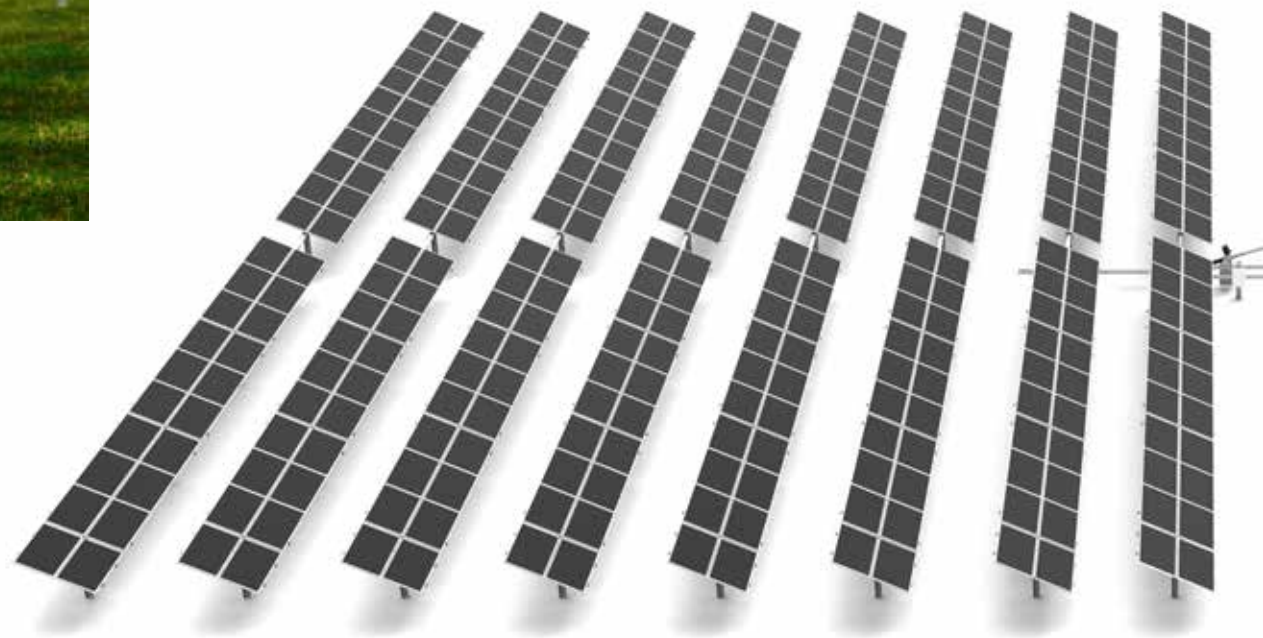
Through innovation and diversification our company has grown exponentially since its founding in 1996. We maintain a diverse portfolio of PV balance of systems ("BOS") products, including custom harness solutions, combiner/re-combiner boxes, junction boxes, PV wire, in-line fuses, racking and string level monitoring solutions. Our team expects and maintains the highest standards for excellence. It is this standard, and a pursuit for innovation, that drives Shoals to invent simple.

With solutions second to none in the marketplace, we are privileged to have our products installed in some of the largest solar fields around the world.



combiner installation >

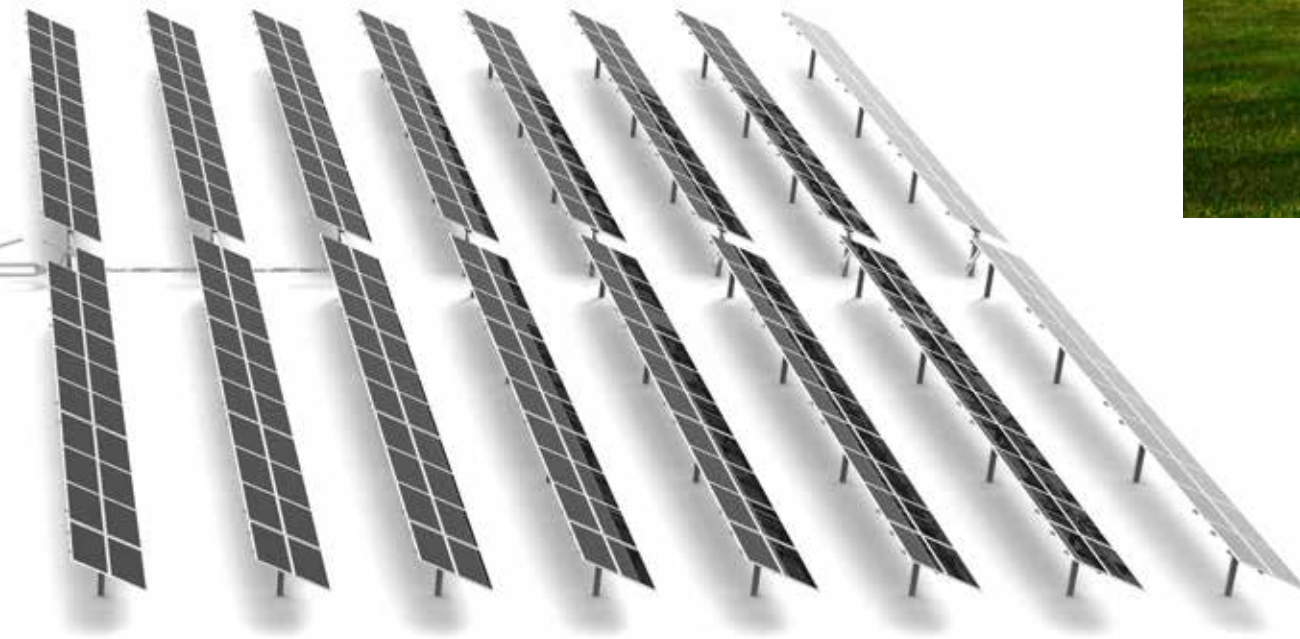
- tracker
- combiner boxes
- component harnesses
- home-run harnesses
- optional SnapShot® monitoring



the choice is yours

You tell us which installation set-up you prefer... a traditional combiner installation or our simplified bla installation. Either way, we want to be part of your next project!

You bring the glass and labor...
we'll provide the rest.

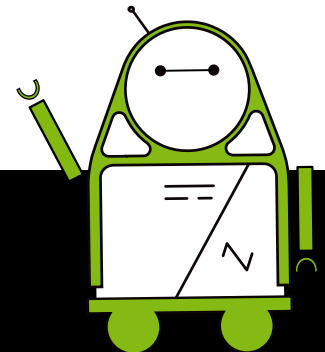


combinerless installation >

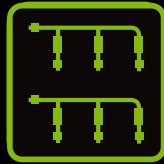
bla
big lead assembly™

- tracker
- bla harness
- component harnesses
- optional blm SnapShot® monitoring

available in central or string configurations



harnesses >



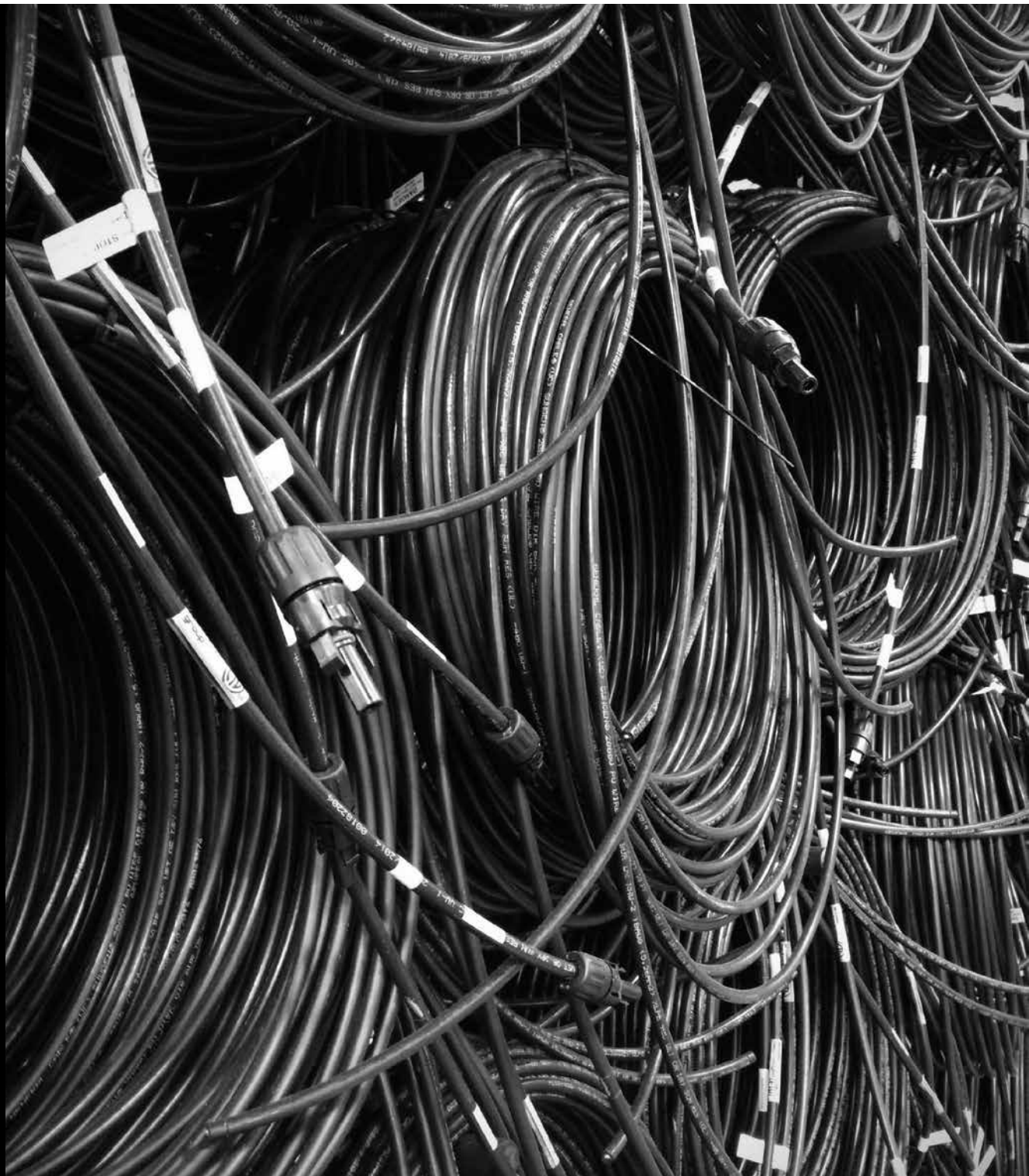
Shoals' patented Interconnect System™ and home run harnesses reduce the specialized labor required in your installation, making the integration of solar panels a breeze. Whether purchased separately or pre-installed in the combiner box to streamline installation, Shoals home-run harnesses and Interconnect System™ are perfect for any PV project.

Features

- Resistance welded joints
- Patented chemically bonded overmolding process
- Custom manufactured to the installation
- Pre-labeled to decrease installation time and errors
- Certified to UL9703 for 600V, 1000V & 1500V systems

Benefits

- Reduced potential points of failure
- Reduced maintenance costs
- Line failures reduced over 90%
- Average 20% reduction in labor cost
- Average 50% reduction in material cost





interconnect system™



whip

A method of connecting a terminal to a connector. A typical use would be from a combiner box to a string of panels.

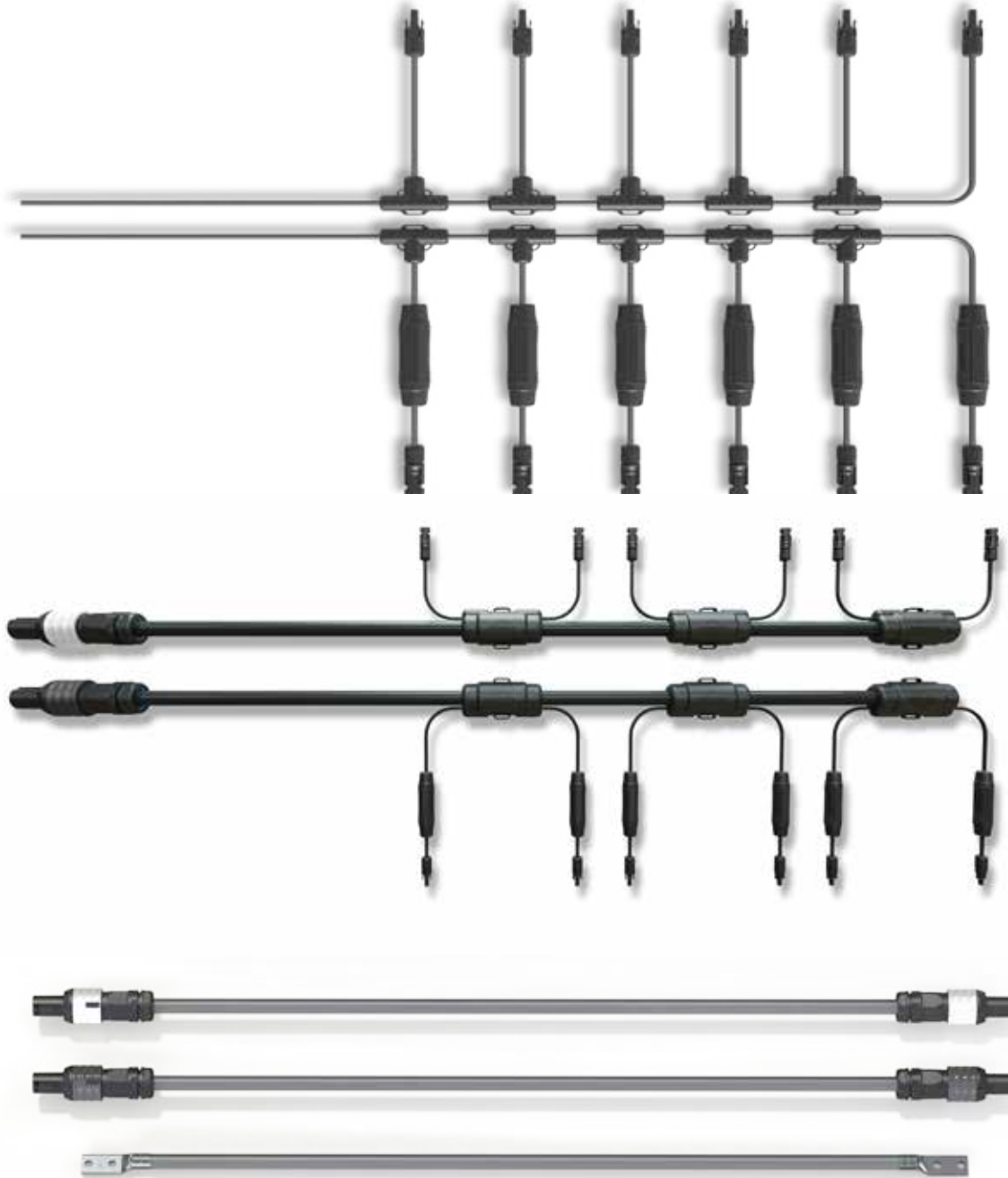
jumper

A method of connecting two components with connectors. A typical use would be connecting strings between two rows or connecting a string to a Shoals combiner box with pre-installed pigtails.

branch connectors

A method of combining multiple wires without the need for in-field splice. This patented device helps increase efficiency on site while reducing the amount of wire and number of combiner boxes needed.

interconnect system™



inline fuse harness

Maximize the current rating of the DC combiner fuse holders and reduce the number of DC combiner boxes on site. By using a Shoals Harness that incorporates Shoals In-Line fuse, installers can pre-combine strings before the combiner box.

bla

The BLA (Big Lead Assembly®) takes the component harness to a whole new level. Making use of the Shoals In-Line fuse and wire welding manufacturing process, we can offer a site that is free of DC string combiners, all of the load is combined in the large conductors that typically run between the string combiner and the inverter. No need to trench for DC feeders or hang string combiner boxes. And when booted with BAC connector, the entire array is plug-and-play, plug in the panel strings, plug into the inverter.

dc feeders

Shoals can supply the larger conductors that run from the string combiner to the inverter or re-combiner, cut to length and outfitted with any style lug required on site. It can also be ordered with the BAC connector so there is never any need to torque check which reduces O&M time and costs.

combiners >

The next evolution of combiner boxes, optimizing both cost and layout without sacrificing quality or performance. The new SlimLine® combiner box series from Shoals provides both a lighter weight and more compact design than ever before.

Features

- UL98B listed DC disconnect
- Finger-safe fuse holders
- Oxygen-free, plated busbars
- Listed to UL1741 & CSA 22.2
- NEMA 4X enclosure
- 5-year warranty standard on all models

Options

- Snapshot® wireless monitoring
- Surge suppression
- Indicating fuse holders





combiner boxes



ultra slimline series

This is our most compact series of DC string combiners, but still allows plenty of elbow room for landing wire in the box and meeting NEC requirements for wire bending space for parallel 500MCM outputs.



slimline series

When larger output wires are required, up to single 900MCM or dual 750MCM, this is the product line for the job.

combiner boxes



dual fused series

When installing a floating ground system, look no further than the Shoals Dual Fused series. And it has all of the options available with our Slimline series with overcurrent protection for both potentials.



snapshot® series

This line of combiner boxes allows an installer to gather information down to the string level from anywhere in the world.

combiner boxes



AFCI series

When required to meet the NEC 2014, our AFCI series is all you need. Fully listed to UL1741 and UL1699B and offers the same convenient configurations as our other combiner series.



1500V series

The next step in efficiency while maintaining simplicity. This product line offers on average a 30% savings in dollars per watt over its 1000VDC predecessor.

combiner boxes



AC combiner series

When string inverters are being utilized, the Shoals AC Combiner is a perfect paring. Designed from the ground up for PV applications, this product can be configured for any string inverter manufacturer.



AC disconnect series

When string inverter installations require AC isolation at the inverter, the Shoals AC disconnect has you covered. With multiple configurations available, this product is sure to offer a seamless plug and play installation.

combiner boxes



disconnect units & re-combiner boxes

When faced with NEC 690 requirement of disconnecting inputs into the inverter, this product offers a very cost effective means of complying in a very compact package.

combiner boxes



landed or modified boxes



The next evolution of combiner boxes, optimizing both cost and layout without sacrificing quality or performance. The new SlimLine combiner box series from Shoals provides both a lighter weight and more compact design than ever before.

Features

- UL98B listed DC disconnect
- Finger-safe fuse holders
- Oxygen-free, plated busbars
- Listed to UL1741 & CSA 22.2
- NEMA 4X enclosure
- 5-year warranty standard on all models

Options

- SNAPShot® wireless monitoring
- Surge suppression
- Indicating fuse holders



Hassle-free installation

Make your life even easier by having us pre-install the harnesses at our manufacturing facility. The harnesses will be bundled on a spool pre-attached to your combiner box, making your installation a breeze.

LMB with pre-attached positive & negative pigtails

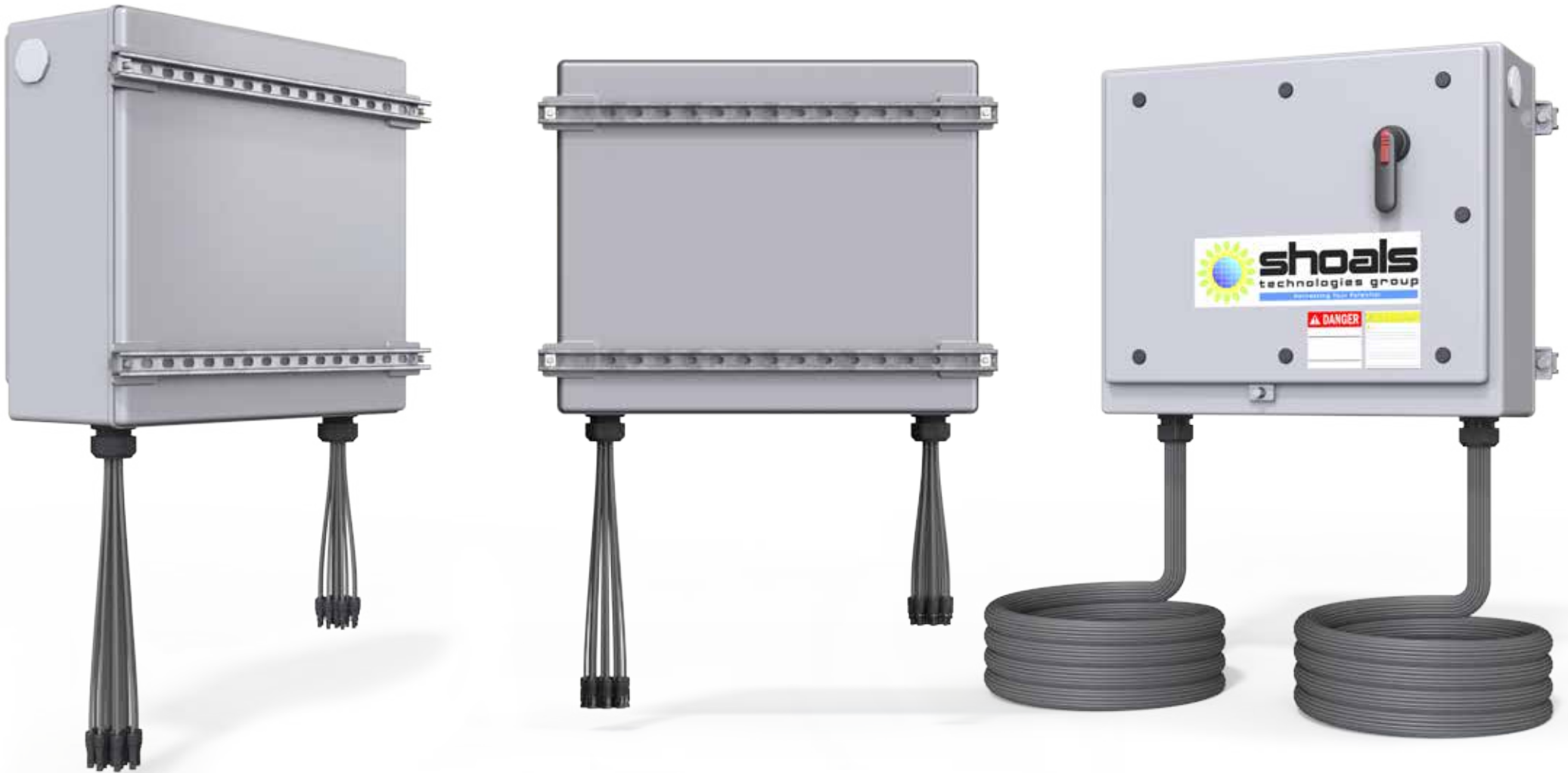


Glands can be attached for strings and knockouts can be made for conduit entry.

combiner boxes

LMB with mounting strut attached to the back for easy field installation.

Full length bundled harnesses, component harnesses or pigtails can be pre-installed so that the combiner box is mounted & harnesses are simply unrolled and plugged into the panel strings.



Features

- 600V, 1000V or 1500V capability
- Up to 30 amps per string
- Powered from DC busbar
- Supports external plug-ins for additional features
- No battery change required
- Proprietary wireless mesh protocol
- Maximum ranges exceeding 3 miles
- FCC certified on all 16 channels
- IEEE 802.15.4 low-power mesh protocol
- AES-128 encryption
- Adjustable polling frequency
- Instant-on, self-detecting & self-healing
- 5-year warranty standard on all models

Measured Variables

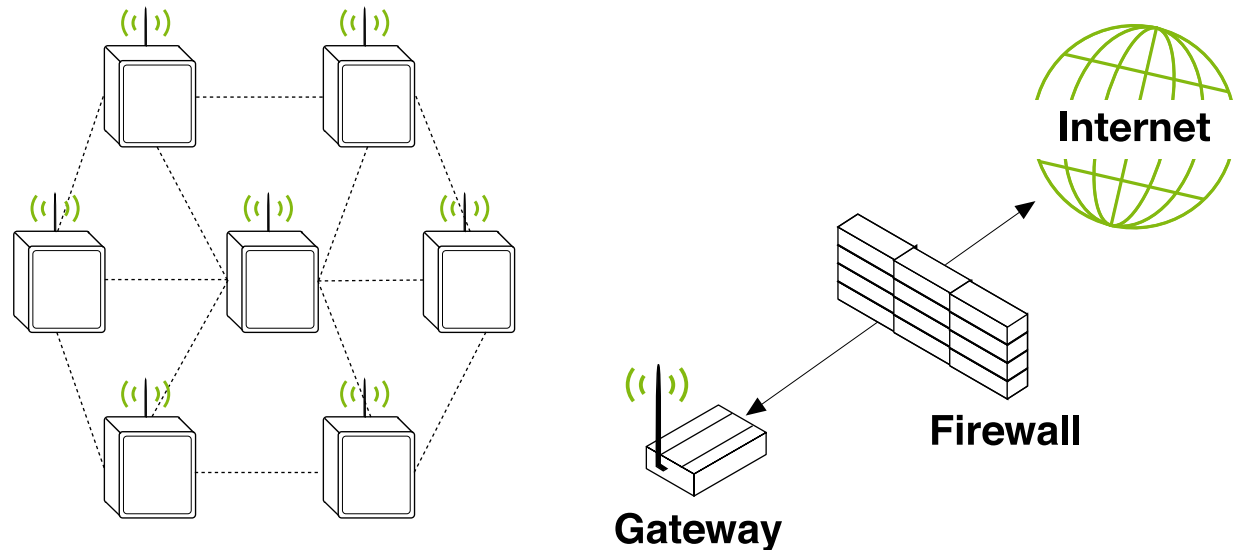
- Temperature (C°)
- Current (A)
- Voltage (VDC)

Available Accessories

- Modbus Interface
- External glass temperature sensor
- Custom SCADA adapters

Self-Detecting, Self-Healing Wireless Network

In the Snapshot® wireless network there are no single points of failure, any node can talk directly to any other node that is in range, and any node can talk indirectly to any other node via intermediate nodes. These routes between nodes do not have to be pre-configured by the user, as the networks are self-forming (the network establishes itself). When a new node is powered-up, it is automatically integrated into the network and becomes fully operational in a fraction of a second. Furthermore, Snapshot® wireless networks are self-healing; if a node fails for any reason, other nodes will automatically route signals around the failed node.



wireless monitoring >





Wireless Monitoring...it's a SNAP

Snapshot® Wireless Monitoring installs with ease with no need to run power or communication cables to the combiner boxes. This allows for easier deployment when compared to similar products on the market.

Built upon battlefield proven, military grade technology, Snapshot® Wireless Monitoring is based on a low power, high performance, secure mesh network that can recover from any issues, large or small, encountered in the field.





Features

- Pre-wired Sunny Tripower Inverter, AC & DC disconnect
- Overall dimensions – 60” L x 32.5” W x 30” T
- Collapsible for flat pack shipping
- Meets NEC 2014 requirements when placed within 10ft of PV array
- Available with pre-installed Shoals Tripower Connection Kit

Benefits

- Easily transportable
- Reduced maintenance costs
- No tools required for installation
- Reduced labor costs
- Small foot print

The Skidget® inverter mount is a pre-wired, rack for the Sunny Tripower string inverter that can be configured to include DC disconnecting combiner &/or AC disconnect. Designed with speed of installation in mind, this little guy can be moved around a rooftop with a set of optional wheels or easily carried by 4 people. It is collapsible to help lower shipping costs and when deployed sits at 15° from horizontal. It has non-slip, non-penetrating feet that can be anchored to meet seismic zone 4 requirements where necessary. It has a small foot print so you can get the most out of your rooftop array.



POWERhouse®



Features

- 500kW – 4MW
- Single or Double inverter
- Integrated Bus System
- Modular System
- Self-Aligning Skid Structure

Benefits

- 20% Reduction in steel
- 70% Reduction in weight vs. pre-fab steel skids
- 80% Reduction in weight vs. pre-fab concrete skids
- Reduction in labor cost
- Small foot print

Shoals' Powerhouse® is a modular power skid solution that is compatible with any inverter and any transformer. It is a turn-key power station that is built in a controlled environment, has a short lead time and doesn't require large equipment on site. The Powerhouse is lightweight and has a small foot print which means you spend less on shipping and need smaller equipment to move it around on site. With a customizable auxiliary wall to place any electrical equipment you need from data acquisition units to weather stations to just an AC distribution panel. The Shoals' Powerhouse® will save you money and have your install producing faster than you ever thought was possible.



projects >

APPLE DATA CENTER > 20MW Maiden, North Carolina USA

PPA: Duke Energy | Owner: Apple

EPC: Sunpower | Commissioned: December, 2013

Site Area: 100 Acres | Modules Used: ~50,000

Shoals Products: Junction Box Lead, Harnesses, Combiners

LUZ DEL NORTE > 141MW COPIAPÓ, CHILE

PPA: Sun Edison | Owner: First Solar

EPC: First Solar | Commissioned: December, 2010

Site Area: 478 Hectares | Modules Used: ~1,700,000

Shoals Products: Junction Box Lead, Harnesses

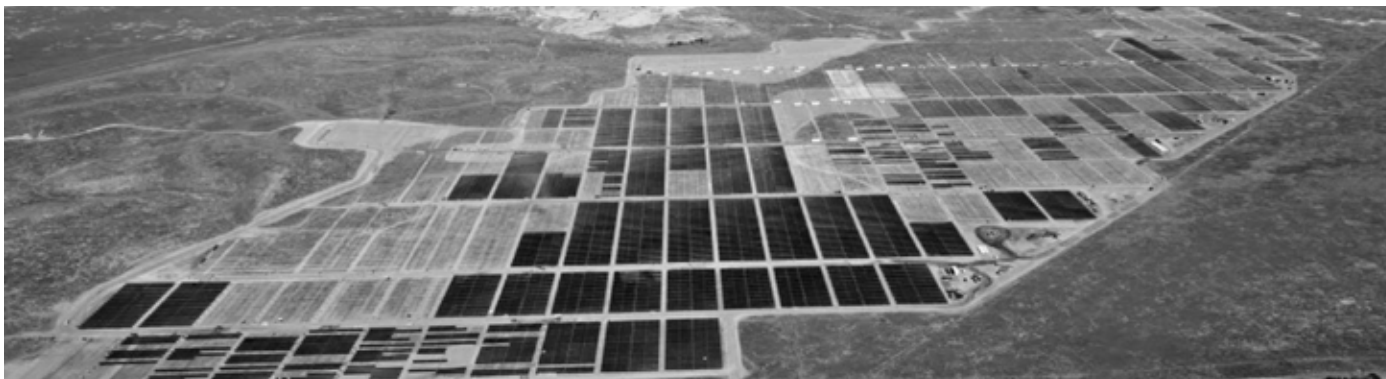
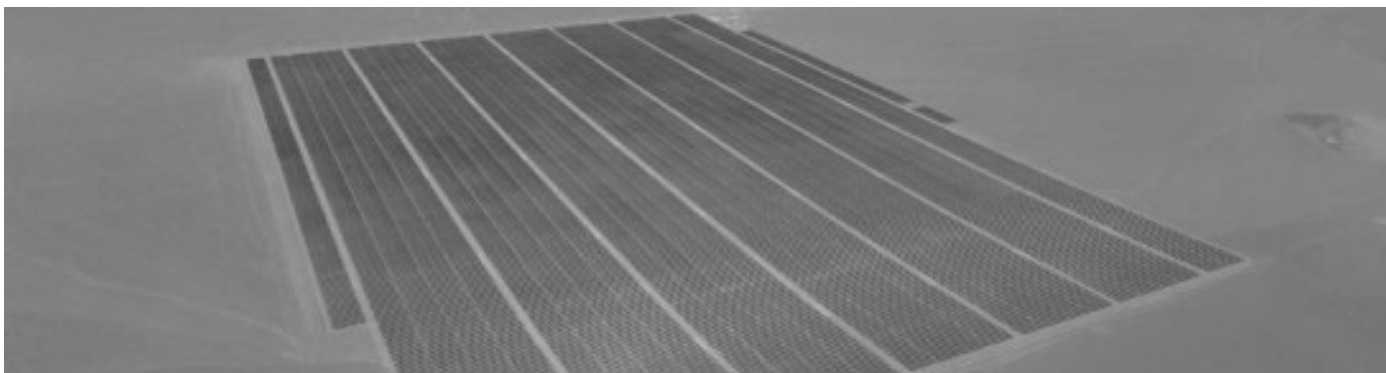
TOPAZ SOLAR FARM > 550MW SAN LUIS OBISPO COUNTY, CALIFORNIA USA

PPA: Pacific Gas & Electric | Owner: BHE Renewables

EPC: First Solar | Commissioned: 2015

Site Area: 4,700 Acres | Modules Used: ~9,000,000

Shoals Products: Junction Box Lead, Harnesses



projects >

COPPER MOUNTAIN 1-2-3 > 458MW Boulder City, Nevada USA

PPA: Sempra Generation | Owner: Sempra Generation

EPC: First Solar | Commissioned: December, 2010

Site Area: 1,400 Acres | Modules Used: ~7,000,000

Shoals Products: Junction Box Lead, Harnesses

ALPAUGH > 92MW Alpaugh, California USA

PPA: Pacific Gas & Electric | Owner: Con ED Development

EPC: Quanta | Commissioned: January, 2013

Site Area: 650 Acres | Modules Used: ~1,000,000

Shoals Products: Junction Box Lead, Harnesses, Combiners

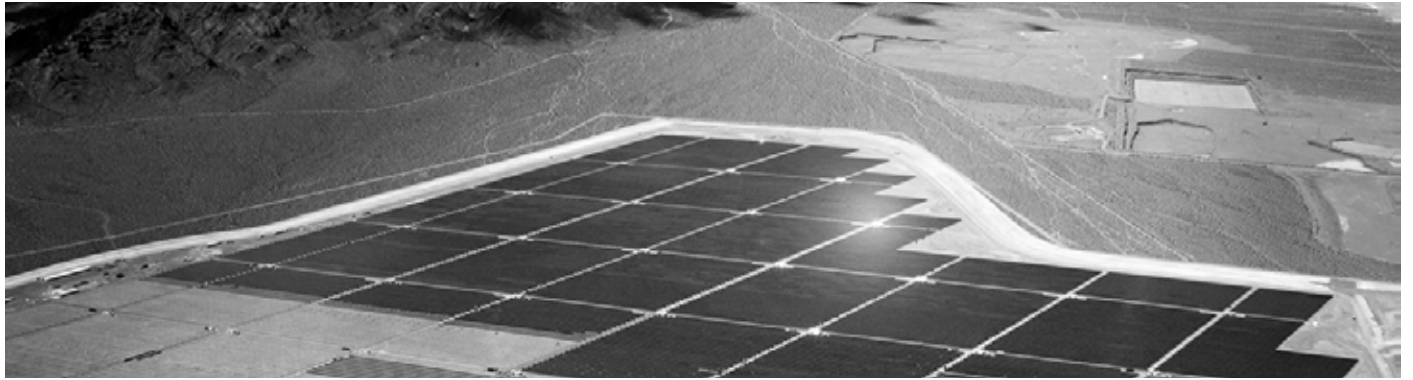
NYNGAN > 102MW Nyngan, New South Wales AU

PPA: AGL Hydro Partnership | Owner: AGL Energy Limited

EPC: First Solar | Commissioned: June, 2015

Site Area: 618 Acres | Modules Used: ~1,350,000

Shoals Products: Junction Box Lead, Harnesses





WWW.SHOALS.COM

shoals technologies group

1400 shoals way

portland, tennessee 37148

ph. 615 451 1400

f. 615 325 5252

e. sales@shoals.com